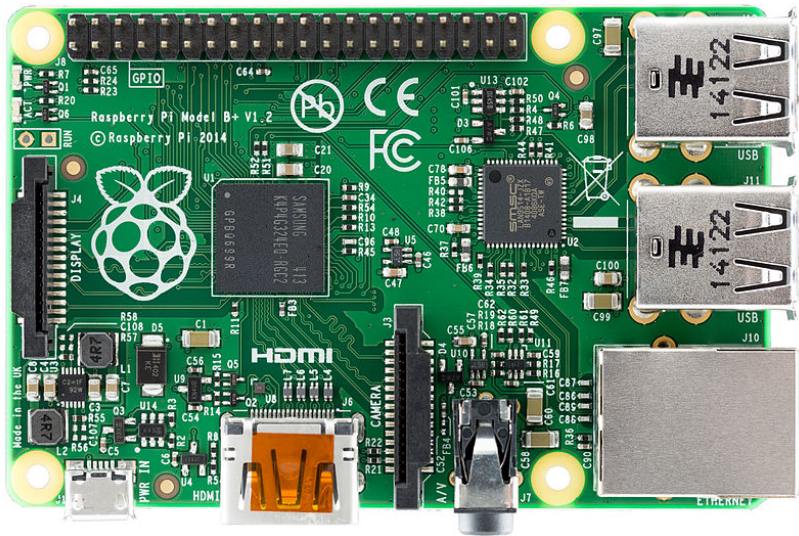


Free Software on Free Hardware

Open Source Hardware running Official Debian Releases

September 3, 2015

Raspberry Pi



https://en.wikipedia.org/wiki/File:Raspberry_Pi_B%2B_top.jpg

Not OSHW!



[https://commons.wikimedia.org/wiki/File:
Hannibal_Poenaru_-_Nasty_cat_!_\(by-sa\).jpg](https://commons.wikimedia.org/wiki/File:Hannibal_Poenaru_-_Nasty_cat_!_(by-sa).jpg)

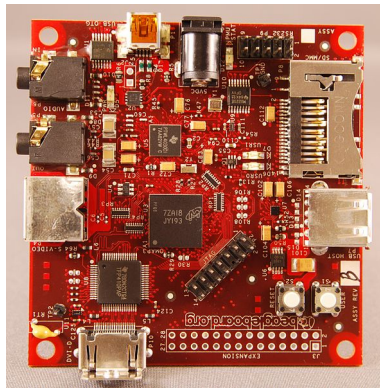


open source hardware

<http://www.oshwa.org/open-source-hardware-logo/>

<http://www.oshwa.org/definition/>

BeagleBoard



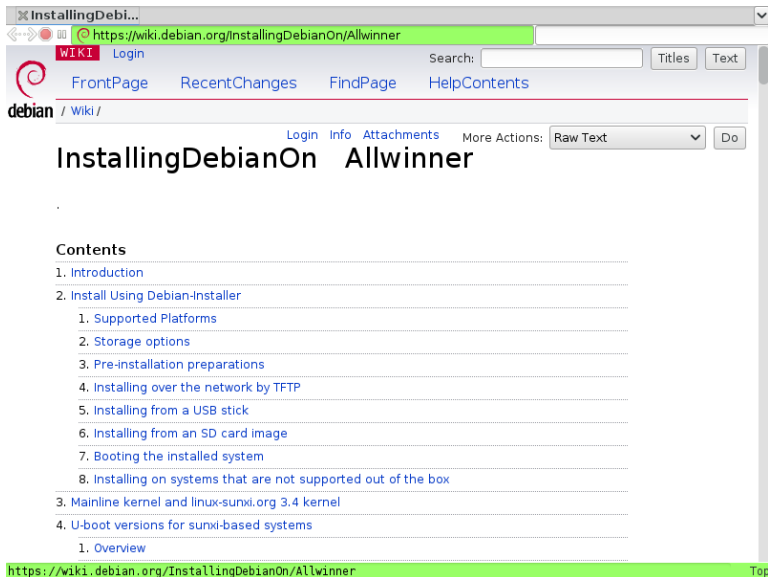
https://en.wikipedia.org/wiki/File:Beagle_Board_big.jpg

Appliance...



[https://commons.wikimedia.org/wiki/File:
Cat_sitting_on_bricks.jpg](https://commons.wikimedia.org/wiki/File:Cat_sitting_on_bricks.jpg)

Installing Debian On Allwinner



The screenshot shows a web browser window displaying the Debian Wiki page titled "Installing Debian On Allwinner". The browser's address bar shows the URL `https://wiki.debian.org/InstallingDebianOn/Allwinner`. The page header includes the Debian logo, navigation links like "FrontPage", "RecentChanges", "FindPage", and "HelpContents", and a search bar. The main content area features the title "Installing Debian On Allwinner" and a "Contents" section with a list of links to various installation topics. The browser's status bar at the bottom shows the same URL and a "Top" button.

InstallingDebi...

https://wiki.debian.org/InstallingDebianOn/Allwinner

WIKI Login Search: Titles Text

FrontPage RecentChanges FindPage HelpContents

debian / Wiki /

Login Info Attachments More Actions: Raw Text Do

Installing Debian On Allwinner

.

Contents

- 1. Introduction
- 2. Install Using Debian-Installer
 - 1. Supported Platforms
 - 2. Storage options
 - 3. Pre-installation preparations
 - 4. Installing over the network by TFTP
 - 5. Installing from a USB stick
 - 6. Installing from an SD card image
 - 7. Booting the installed system
 - 8. Installing on systems that are not supported out of the box
- 3. Mainline kernel and linux-sunxi.org 3.4 kernel
- 4. U-boot versions for sunxi-based systems
 - 1. Overview

https://wiki.debian.org/InstallingDebianOn/Allwinner Top

`https://wiki.debian.org/InstallingDebianOn/Allwinner`

Installer status

- ▶ Cubietech Cubieboard
- ▶ Cubietech Cubieboard2
- ▶ Cubietech Cubietruck (Cubieboard3)
- ▶ LeMaker Banana Pi
- ▶ LeMaker Banana Pro
- ▶ (OSHW) Olimex A10-OLinuXino-LIME
- ▶ (OSHW) Olimex A20-OLinuXino-LIME
- ▶ (OSHW) Olimex A20-OLinuXino-LIME2
- ▶ (OSHW) Olimex A20-Olinuxino Micro

Installer

```
| [!] Partition disks |
The installer can guide you through partitioning a disk (using
different standard schemes) or, if you prefer, you can do it
manually. With guided partitioning you will still have a chance later
to review and customise the results.

If you choose guided partitioning for an entire disk, you will next
be asked which disk should be used.

Partitioning method:

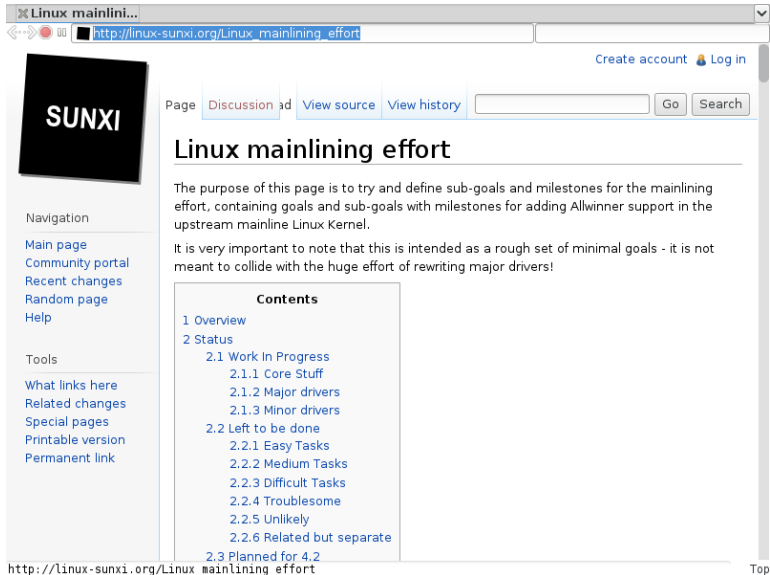
  Guided - use the largest continuous free space
  Guided - use entire disk
  Guided - use entire disk and set up LVM
  Guided - use entire disk and set up encrypted LVM
  Manual

  <Go Back>

<Tab> moves; <Space> selects; <Enter> activates buttons
0* ttyUSB0
```

Mon 2015-05-18 16:36

Mainlining support



The screenshot shows a web browser window with the address bar containing `http://linux-sunxi.org/Linux_mainlining_effort`. The page title is "Linux mainlining effort". The browser's address bar also shows "Linux mainlini...".

Navigation links on the left sidebar include: Main page, Community portal, Recent changes, Random page, Help, Tools, What links here, Related changes, Special pages, Printable version, and Permanent link.

The main content area features a "SUNXI" logo and a "Page" dropdown menu with options for "Discussion", "View source", and "View history". A search box with "Go" and "Search" buttons is also present.

Linux mainlining effort

The purpose of this page is to try and define sub-goals and milestones for the mainlining effort, containing goals and sub-goals with milestones for adding Allwinner support in the upstream mainline Linux Kernel.

It is very important to note that this is intended as a rough set of minimal goals - it is not meant to collide with the huge effort of rewriting major drivers!

Contents

- 1 Overview
- 2 Status
 - 2.1 Work In Progress
 - 2.1.1 Core Stuff
 - 2.1.2 Major drivers
 - 2.1.3 Minor drivers
 - 2.2 Left to be done
 - 2.2.1 Easy Tasks
 - 2.2.2 Medium Tasks
 - 2.2.3 Difficult Tasks
 - 2.2.4 Troublesome
 - 2.2.5 Unlikely
 - 2.2.6 Related but separate
 - 2.3 Planned for 4.2

`http://linux-sunxi.org/Linux_mainlining_effort`

Support status (A10/A20)

	jessie	stretch/sid
Serial console	OK	OK
USB	OK	OK
SATA	OK	OK
Ethernet	OK	OK
MMC/SD	OK	OK
Audio	NO	WIP
Video (simplefb)	partial	OK
Video (accelerated)	NO	WIP
NAND	NO	WIP

Questions?



[https://commons.wikimedia.org/wiki/File:
European_Cat.jpg](https://commons.wikimedia.org/wiki/File:European_Cat.jpg)